



SBIS Newsletter



Scarlet Elf Cup (Sarcoscypha austriaca/coccinea), with thanks to Paul Kitchener

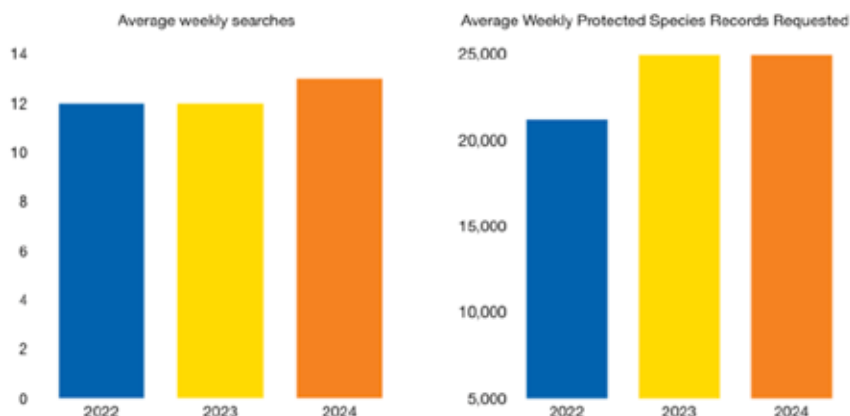
Summer 2024

SBIS News

Commercial Data Enquiries

During the financial year of 2024–5, we have processed 146 searches, supplying 162,688 species records.

This is the equivalent of 13 searches a week with an average of 1,114 records each. Which is an increase of 2 searches per week from the same period last year.



Projects

LIDAR-DERIVED TREE CANOPY POLYGON DATA

Hedgerows

Data generated for hedgerows is now available on our website (www.suffolkbis.org.uk/hedgerow); this includes data on area, height, estimated volume and the total number of tree canopies. We have mapped these quality indicators at parish level and these can be requested free of charge – see examples of the maps we can provide on our website. Additionally, data is available in GIS format for download.

COUNTY WILDLIFE SITES, ROADSIDE NATURE RESERVES, COUNTY GEOSITES

Suffolk Wildlife Trust continues to rewrite many CWS citations, which are being incorporated into our database.

DATA UPDATES TO SLA PARTNERS

The 6-monthly GIS data updates were made available on the SBIS website in June. For those who download the data, notification emails including the download links were sent out. The next updates will be in Nov/Dec.

NATIVE BLACK POPLAR SURVEY RECORDING FORM AND MAP

This is live and accessible via a link on the SBIS website to registered volunteers and Suffolk Tree Wardens.

The planted sapling data is now included as a layer on the map, and volunteers are adding new records to this and verifying existing trees. Records of new trees are sent to the Native Black Poplar Recorder, Sue Hooton, to verify.

Other activity

ANCIENT WOODLAND INVENTORY UPDATE

SBIS continues to work on the Ancient Woodland Inventory update which commenced in November 2021 for Suffolk. The project is now in Phase 3 of 4, with the main focus on checking potential new ancient woodland or pasture and parkland sites on historic maps dating back as far as 1600.

The SBIS team along with a group of volunteers are exploring enclosure and estate maps at the Hold in Ipswich. They hope to find evidence of woodlands as far back as 1600 and collect this data to contribute to the Ancient Woodland Inventory Update.

They have already searched over 500 archive maps and work continues until the end of August. We would like to thank our wonderful volunteers for all the time and effort they have contributed to the project so far. Anyone wishing to join in the effort to check evidence for potential new ancient woodland sites at the Hold can sign up to volunteer by emailing Hannah.Alred@suffolk.gov.uk.



UKGardenPhotos, Flickr

Ancient Woodland Inventory



Archive Volunteer, Ipswich

Volunteer in person at The Hold, Ipswich. We will meet in person to look at historic maps from Suffolk archives and determine if these correspond to sites identified as potentially new ancient woodland or ancient wood pasture and parkland habitat in Suffolk as part of the Ancient Woodland Inventory update. For more information and to sign up, please contact Hannah Alred: Hannah.Alred@suffolk.gov.uk.



Forthcoming events

Search the events

You can use this box to filter by dates, locations, event organisers or keyword

Apply

Saturday, 15 June, 2024

Anglian Microscopy Group: Pseudoscorpions



© Nathan Jackson, iNaturalist

Compost safari • Crowfield Village Hall, Stone Street, Crowfield, Suffolk, IP6 9SZ

[More details...](#)

SBIS Website changes

Emma Aldous, SBIS

Two new features have been added to the SBIS website.

On the front page, and the news and events page, we now have a searchable events listing.

The events are listed in date order and are prefixed by the organising body. It includes courses, webinars, talks, walks, bioblitzes and more! Events can be searched by keyword, for example: month, organiser, location.

We hope you find it useful, and if you have any suggestions for additional events do let me know: Emma.Aldous@suffolk.gov.uk.

Our second feature is an Ancient Woodland hub, see p. 4 for more details.

Our database has grown further still, it now holds over **6 million records!**



NEW ANCIENT WOODLAND HUB

Emma Aldous, SBIS

As the Ancient Woodland Inventory (AWI) update draws to its conclusion we have shared the information packs and training resources we created. These are all available via the new **Ancient Woodland hub** on the SBIS website.



Discover some useful Tree ID tips in our webinar, illustrated PDF, or dedicated web page



Watch our webinar or download an illustrated PDF about the different types of woodland communities in Suffolk



Learn about Indicator Species with our webinar, illustrated PDF, or dedicated web page



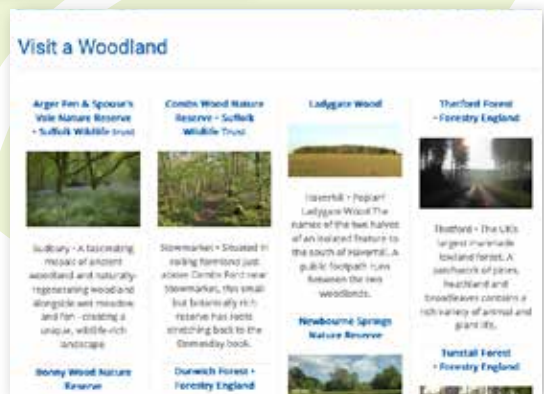
Read about our role in the AWI update and how the project has progressed since November 2021



Find ancient woodlands that you can visit



Explore the habitat types and features of ancient woodlands





Suffolk Coprolites

Caroline Markham, GeoSuffolk

On March 12th this year GeoSuffolk and the Coast & Heaths National Landscape Work Party cleared a Red Crag pit in Ramsholt.

Situated on private land this has 8m vertical sections showing current bedding with thin, pebbly 'coprolite' lag deposits, shell avalanches, and mud drapes. Eleven of us braved the drizzle (although it was surprisingly sheltered in the pit) and cleared talus from about half of the faces, exposing a more-or-less continuous coprolite seam along 50+ metres of the quarry. We last

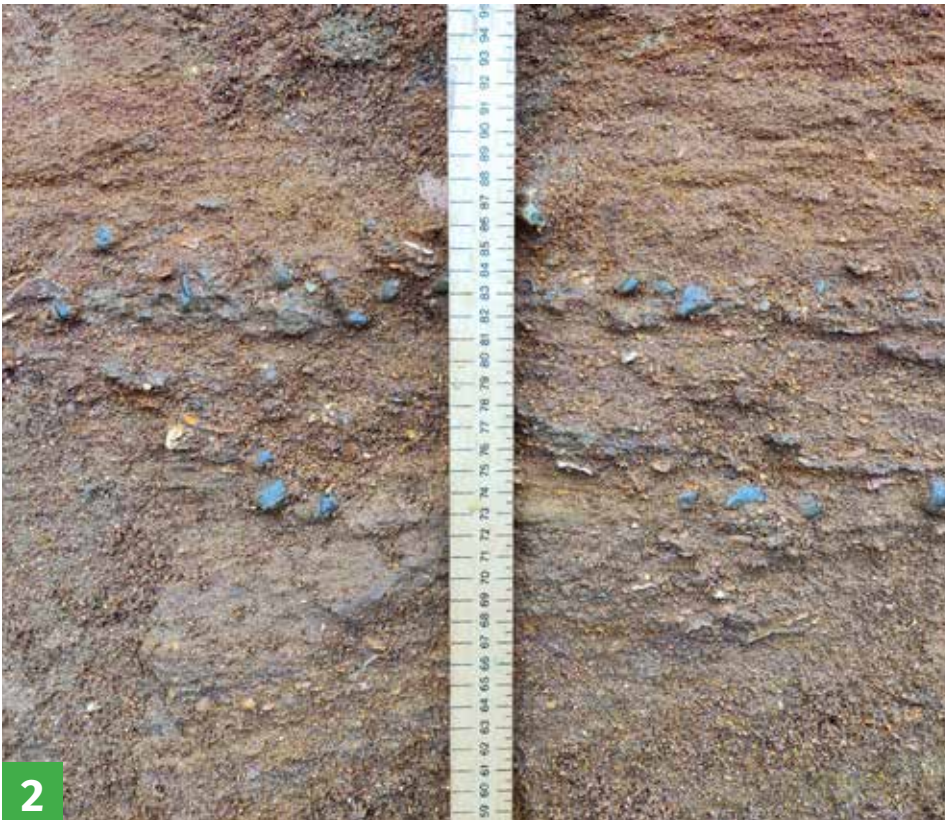
visited in 2018, so hopefully we have kept it clear for another six years!

Coprolites are nodules rich in phosphate, found in the Red Crag, particularly in the area around the Deben estuary. They are largely mudstone nodules, many eroded out of the underlying London Clay, becoming phosphatised and incorporated into the Red Crag. An

initial thought was that they were coprolites (fossil animal droppings – possibly some are!) and thus the word coprolite became the commercial name for these phosphatic stones.

In 1843 John Stevens Henslow, Professor of Mineralogy and Botany at the University of Cambridge, first identified the coprolite nodules whilst on holiday with his family in Felixstowe. He had them analysed and they were found to be rich in phosphate, a valuable boon to agriculture and so

Suffolk Coprolites



began our local coprolite industry. The 1840s were a time of shortage of phosphatic manure and the local coprolite stones provided a new way to increase production of grain, peas and beans. They were quarried from local crag pits, were ground to powder and treated with sulphuric acid to make superphosphate (which is soluble for plant uptake) in Edward Packard's factory in Ipswich. (The factory is long gone, but Coprolite Street remains.)

The 'waste' from the coprolite pits, flint in particular, was put to good use as a local building stone. All Saints' Church, Sutton has been designated as a County Geodiversity Site by GeoSuffolk because its building materials used during the 1854-60 restoration work were waste products from the 19th century 'coprolite' pits in the area and are thus of historic as well as geologic interest. We condition monitored it on April 4th this year and found flints encrusted with Red Crag barnacles and boxstones (rounded brown sandstone pebbles derived from earlier Miocene deposits), both of which were found in the local 'coprolite beds'. We gave it a GOOD rating and reported this to SBIS, the Vicar and the Parish Council. It is a fitting memorial to an important local industry.



Photo 1 Phosphate nodules from an excavation in Bucklesham.

Photo 2 Pebble bed with phosphate nodules and shell fragments – traced along the west face and much of the south face of Ramsholt Red Crag pit.

Photo 3 A flint with Red Crag barnacles adhering – in the south wall of Sutton Church.

For more information see the leaflet *Suffolk's Crag Coprolites* in the Archive on GeoSuffolk's website www.geosuffolk.co.uk

COUNTY WILDLIFE SITE OWNERS NETWORK

Graham Hart, Suffolk Wildlife Trust

Suffolk Wildlife Trust have created a County Wildlife Site (CWS) Owners Network to help connect and support owners of CWS in Suffolk through sharing of experiences, knowledge, and best practice.

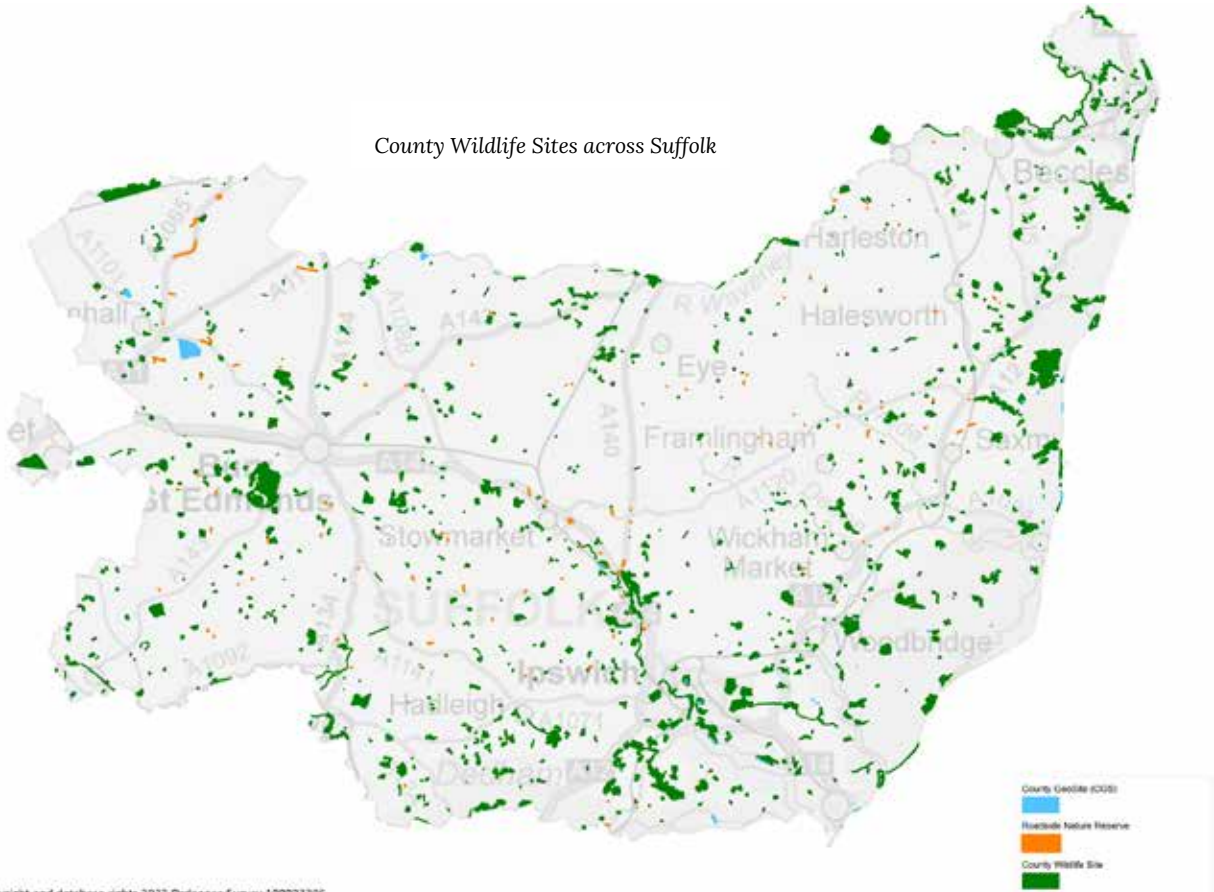
County Wildlife Sites have a key role in the conservation of Suffolk's biodiversity providing vital habitats for species and linking wildlife corridors across the landscape. Together with Suffolk Wildlife Trust, we're committed to encouraging and supporting the management of CWS for wildlife.

If you are the owner of a County Wildlife Site and would like to join Suffolk Wildlife Trust's CWS Owners Network, please confirm your interest by emailing Graham Hart (Conservation Adviser) at: graham.hart@suffolkwildlifetrust.org



© Emma Aldous/SBIS

County Wildlife Sites across Suffolk



9 Happy Years

Dr Adrian Cooper

Felixstowe's Community Nature Reserve was founded on 11 May 2015 – so we've been celebrating our 9th birthday!

This article is an opportunity to thank everyone across Suffolk who has helped our growth. We have over 1,700 active members. With each member having allocated at least three square yards of their garden and / or allotment to support local wildlife, we have created new wildlife-friendly habitat equivalent in area to a full-sized football pitch.

We share a lot of information about our activities through social media, so we're always happy for people to visit our Facebook page. For local people who do not use social media, we share our news through Spotlight on Felixstowe – and we want to thank their amazing team for all their support. Each article we share in Spotlight on Felixstowe goes to about 15,000 local homes. Felixstowe Radio has also been hugely supportive of our work.

A few years ago, we appointed Gill Atacocugu as our Schools Ambassador. Gill teaches at Suffolk New College. Part of her work has been to inspire students to express their passion for environmental sustainability through poetry, art and class-room debate. We also have an Artist in Residence, Charmaine McKissock, who shares her ideas about the connections between painting, drawing and the environment. Finally, on the education front, we have a STEM Ambassador who promotes the connections between science, technology and engineering in developing school-based wildlife gardens.

Across Suffolk, our ideas have been adapted by groups in Ipswich, Bradfield, Debenham, Newmarket and Woodbridge. Across the UK, community-based conservation

projects have been established, again based on our ideas, in Brightlingsea, Burton Latimer, Calne, Cosby, Emersons Green, Fulwood, and Hitchin. In Portugal, we helped to establish the Pontos and Vida project.

Felixstowe's Citizen Science Group monitors the effectiveness of our

work. They share their results locally, across the UK and across the 27 nations of the European Union.

With our roots fixed firmly in the Felixstowe area, but with our branches going almost everywhere, we will continue to support wildlife and natural habitats.



© Charmaine McKissock

River Deben Action Plan and Water Restoration Fund Bid

Jess Duckenfield,
Essex and Suffolk Rivers Trust



Sea Trout

The East Suffolk Catchment Partnership has recently launched the “Recovering the Deben from Source to Sea” project, aiming to revitalise the River Deben and its estuary through a collaborative effort involving community groups, conservationists, farmers, and industry representatives.

This initiative, coordinated by the Essex & Suffolk Rivers Trust, focuses on improving the river’s ecological health, which is currently meeting only 11% of ecological standards, threatening habitats and biodiversity.

Dr. Helen Dangerfield, Director of the Essex and Suffolk Rivers Trust, emphasises the importance of collective action: “Together we are so much stronger.” The plan’s five key steps target crucial ecological issues to achieve good status by 2030. Local stakeholders are encouraged to participate and shape the future of the river through surveys and active involvement.

The project has entered a £250,000 Water Restoration Fund application to help deliver the next stage of the programme, which is aimed at benefitting the range of red list wildlife species that the river and estuary support. The project aims to return sea trout and European eel to the river as well as creating up to 210 hectares of new habitat along the riverbanks of the Deben. The funding will facilitate improving water quality, habitats and biodiversity with key components of the project



Representatives of partnership organisations visiting the river Deben ahead of the Action Plan launch (Left to right: Colin Nicholson, Mariah Ballam and Dr Helen Dangerfield)

including tackling barriers to fish migration, establishing a super-buffer zone along the river, and piloting water treatment solutions.

This ambitious programme aims to reverse the decline in SSSI habitats and tackle diffuse pollution, addressing over 42% of the activities identified as causes for the river to not achieve good ecological status. The project underscores the urgent need for action to protect and enhance biodiversity in the River Deben.

For more information and to get involved, visit the project pages on the Essex & Suffolk Rivers Trust website:

- [Introducing the River Deben Action Plan](#)
- [Water Restoration Fund Bid for the River Deben](#)



East Suffolk
Catchment Partnership



European Eel



HEDGEHOGS: ALL YOU NEED TO KNOW & HOW TO HELP!

Suffolk and Essex National Landscapes

The hedgehog is a priority species in the Suffolk and Essex National Landscape Nature Recovery Plan

In the past decade over a half of rural hedgehogs, and a third from towns and cities, have been lost. Areas in and around towns and villages are excellent habitats for hedgehogs, and they often prefer them to farmland.

This decline is caused by the fragmented landscapes by houses, roads, walls, fences and farming which have combined to reduce connectivity and wildlife corridors.

It's important to create links

between gardens and countryside to provide enough habitat so that they can feed, nest and hibernate.

What you can do:

- Create wild areas with leaf and log piles for they can use for shelter and finding food
- Remove any netting to avoid tangles and make your pond safe with a ramp
- Put out water and food to supplement their natural diet

What to feed Hedgehogs

- Avoid using chemicals that reduce the hedgehogs' creepy crawly prey
- Check for hedgehogs before having a bonfire or cutting long grass
- Make a DIY home for hedgehogs to give them somewhere to nest and hibernate

The National Landscape Team have been helping by giving away hedgehog homes and hedgehog highway signs.

The Suffolk & Essex National Landscapes team & the Suffolk Wildlife Trust hosted a live online talk and Q&A all about hedgehogs.

Topics included what hedgehogs are, what they eat, when they sleep and hibernate, the challenges they face, what we can do to help in our own gardens, community action, examples of projects in villages, and lots more.

You can see the recorded talk [here](#).



SNS INVERTEBRATE RECORDING MEETING HALESWORTH 20 JULY 2024 10AM – 4 PM

Situated in the centre of Halesworth, the Millennium Green is celebrating 25 years in public ownership and to mark this occasion they are keen to update their invertebrate records for the site. This mixed habitat comprises grassland, wetland, a canal, mature

trees and a smaller heathy area and SNS Recorders and other specialists should find much to interest them here. Buns and soft drinks provided.

To express an interest in attending or for further information, please

contact Nicky Rowbottom, 07715 047391, nicky.rowbottom@btinternet.com.

The map shows the layout of the site, note the bridge marked with a red cross is closed for safety reasons.

Angel North car park (IP19 8SW) is £4 for the whole day and is the recommended place to park. Other car parks are £2 for 4 hours and no return is permitted within 2 hours.

On street free parking may be available elsewhere e.g. on Quay St, Holton Rd.

Halesworth Rail Station is on the Ipswich–Lowestoft Greater Anglia line.



Suffolk Naturalists Society - Members Group

Suffolk Naturalists Society has a growing and active Facebook group where SNS members share their photos and observations, and ask for, or offer, help with identifying mystery sightings.

To join the group:

- Search Facebook for Suffolk Naturalists Society - Members Group
- Use the QR code above
- Use this url – <https://www.facebook.com/groups/5161346860620607>



Conferences, Webinars and Training

SUFFOLK WILDLIFE TRUST

- Wild Walks: Bird I.D with Paul Holness • twice a month • Lackford Lakes
- Evening Wildlife Walks • 5 Jul • Kirton Creek
- Summer Butterfly photography • 6 Jul • Bradfield Woods
- Birdwatching walk along the banks of the River Orwell • 6 Jul • Harbourside Kitchen
- Butterfly Talk • 10 Jul • Carlton Marshes
- Boat trip to Worlingham Marshes, • 10 Jul • Carlton Marshes
- Butterfly walk • 11 Jul • Bradfield Woods
- Evening Wildlife Walks • 12 Jul • Upper Hollesley Common
- Walk: Butterflies in Bonny Wood • 13 Jul
- Beyond the Fences Trailer Safari • 17 Jul • Carlton Marshes
- Evening Wildlife Walks • 19 Jul • Waldringfield
- Summer Tree ID • 20 Jul • Bradfield Woods
- Evening Wildlife Walks • 26 Jul • RSPB Boyton Marshes
- Butterfly ID Workshop • 26 Jul • Carlton Marshes
- Wild Walks: the Heath at dusk • 31 Jul • Knettishall Heath
- A River Trip with SWT • 2 Aug • Orwell Lady River Cruise
- Evening Wildlife Walks • 2 Aug • Bawdsey
- Evening Wildlife Walks • 9 Aug • Seafeld Bay
- Late Summer Bird ID • 11 Aug • Lackford Lakes
- Beyond the Fences Trailer Safari • 12 Aug • Carlton Marshes
- Shimpling Park Farm tour • 13 Aug • Shimpling Park Farm
- Wild Walks: ponies on the Heath • 14 Aug • Knettishall Heath
- Fen Raft Spider Talk • 14 Aug • Carlton Marshes
- Evening Wildlife Walks • 16 Aug • Stutton Ness
- Evening Wildlife Walks • 23 Aug • Trimley Marshes
- Wild Walks: the Heath at dusk • 24 Aug • Knettishall Heath
- Nature walk • 24 Aug • Martlesham Wilds Reserve
- Boat trip to Worlingham Marshes • 25 Aug • Carlton Marshes
- Beyond the Fences Trailer Safari • 28 Aug • Carlton Marshes

Full details, booking and more SWT events

FIELD STUDIES COUNCIL

Natural History Courses

Covering all aspects of the natural world for beginners, enthusiasts, volunteer recorders and professionals.

www.field-studies-council.org/fsc-natural-history-courses

Professional Development for Ecologists and Conservationists

An extensive range of courses that cater to a range of career levels, providing wildlife identification and surveying courses in many subjects.

www.field-studies-council.org/biodiversity/professional-development

BIOLOGICAL RECORDING COMPANY

- Hoverfly Lagoons Project, 17 Jul
- State of the UK's Invertebrates Virtual Symposium, 19 Jul
- Bees and Beyond: Ecosystem Services at a Garden Scale, 5 Sep
- A World of Wasps: Researching the Ichneumonid Wasps, 18 Sep
- Earthworms of the UK Part 2, 23 Sep
- Sow Wild! and Insect ID, 1 Oct
- Damselflies of the UK Part 1, 2 Oct
- Seahorses of the UK, 4 Oct
- Cave Spiders, 15 Oct
- Freshwater Leeches of the UK, 24 Oct
- Biodiversity Net Gain: What Could BNG Mean For Pollinators?, 28 Oct

Details of all BRC events:

www.eventbrite.co.uk/o/the-biological-recording-company-35982868173

THE SPECIES RECOVERY TRUST

Online courses

- Around Britain in 25 Grasses, 2 Sep
- Around Britain in 30 Bryophytes, 9 Sep
- Botany for surveyors - Part 1, 11 Sep
- Around Britain in 20 Ferns, 16 Sep
- Botany for surveyors - Part 2, 18 Sep
- Around Britain in 20 Rushes, 23 Sep
- Botany for surveyors - Part 3, 25 Sep
- How to Survey and Assess Hedgerows using the Hedgerow Regulations, 30 Sep
- Grasses - Part 2, 7 Oct
- Great Crested Newts - Ecology, Conservation and Survey, 8 Oct
- Badger - Ecology, Survey and Mitigation, 16 Oct
- Heathlands and Acid Grassland - Species and Habitat Survey, 16 Oct
- Aquatic Plant ID, 21 Oct

Details of all SRT courses:

www.eventbrite.co.uk/o/the-species-recovery-trust-17335753729

**THE BRECKS FEN
EDGE AND RIVERS**
brecks.org/events/

**LONDON NATURAL
HISTORY SOCIETY**
www.eventbrite.co.uk/o/london-natural-history-society-30790245484

**ROYAL ENTOMOLOGICAL
SOCIETY**
<https://www.royensoc.co.uk/events>

**NATIONAL
BIODIVERSITY
NETWORK**
<https://nbn.org.uk/news-events-publications/upcoming-events>

Suffolk Biodiversity Information Service, The Hold, 131 Fore St, Ipswich IP4 1LR

